

IDENTIFICATION: SINGLE PRECISION FLOATING POINT PACKAGE  
Subroutine Package

AUTHOR: R. Johnsen, PBC

ACCEPTED: 23 April 1962

PURPOSE: To perform the basic arithmetic floating point operations.

RESTRICTIONS:

1. If division by zero is attempted, FDV will exit with no operations performed and no registers changed. No error indication is given.
2. FSR makes no distinction between positive and negative numbers. It will attempt to take the square root in either case. No error indication is given.

STORAGE: 122 sectors of one long line between sectors 000 and 340 plus F01-F06, F10, F13, and F17. Not all the line 00 channels are used by each subroutine.

TIMING:

Float	(FLO)	396 $\mu$ sec
Float	(FLT)	588 $\mu$ sec
Fix	(FIX)	780 $\mu$ sec
Add	(FAD)	984 $\mu$ sec
Subtract	(FSB)	1188 $\mu$ sec
Multiply	(FMP)	672 $\mu$ sec
Divide	(FDV)	780 $\mu$ sec
Square Root	(FSR)	564 $\mu$ sec
Square	(FSQ)	816 $\mu$ sec

ACCURACY: The exponent and mantissa are each accurate to 21 bits plus sign.

USE:

1. Floating Point Format  
A floating point number in this subroutine consists of two words in the following format:
  - a. The first (high order) word contains a normalized mantissa with the binary point between bits 0 and 1.

USE (cont.):

b. The second (low order) word consists of an exponent which represents the scaling of the mantissa.

Example: A floating point 1 in the AB registers would appear as follows (representation is in octal):

+4000000	+0000001
A Register	B Register

A floating point -1 in the AB registers would take this form:

-0000000	+0000000
A Register	B Register

## 2. Use of Subroutines

### a. To float a Fixed Point Number (FLO):

Set Index with line location of subroutine.

LDA	argument
LDC	return command
TRU	entry (see Table 1)

The argument must be a single-precision fixed point number scaled at  $Q = 21$ . Upon exit, the AB registers will contain a floating point number in the format described above.

### b. To float a fixed point number (FLT):

Set index with line location of subroutine.

LDP	argument
LDC	return command
TRU	entry (see Table 1)

The argument must be a single-precision fixed point number. The  $Q$  of the fixed point number ( $Q_1$ ) must be in B scaled at  $Q = 21$ . The fixed point number must be in A scaled at  $Q_1$ .

### c. To Fix a Floating Point Number (FIX):

Set Index with line location of subroutine.

LDP	argument
LDC	return command
TRU	entry (see Table 1)

The argument must be a floating point number as described above. Upon exit, the A register will con-

USE (cont.):

tain a truncated fixed point integer with a fractional part in B, which will be the original fraction before truncation.

d. Floating Square (FSQ) and Square Root (FSR):

Set Index with line location of subroutine.

LDP	argument
LDC	return command
TRU	entry (see Table 1)

The argument must be a floating point number in the format described above.

e. Floating Add (FAD), Subtract (FSB), Multiply (FMP) and Divide (FDV):

These routines each require two arguments. The calling sequence is as follows:

Set Index with line location of subroutine.

Set one argument in F01-F02 (see below).

LDP	second argument
LDC	return command
TRU	entry (see Table 1)

Both arguments must be floating point numbers in the format described above. The argument in F01-F02 must have its exponent in F01 and its mantissa in F02; for FSB, this argument must be the minuend; whereas, for FDV this argument must be the dividend. The contents of F01-F02 will remain unchanged upon exit from the subroutine.

Table 1

Subroutine Entrances and Exits

Subroutine	Entrance Sector	Exit Sector
FLO	000	041
FLT	360	041
FIX	001	102
FMP	074	164
FSB	200	343
FAD	221	343
FDV	112	213
FSR	012	073
FSQ	060	164

## METHOD:

1. FLO: The number is normalized and the exponent decremented from an initial value of 21. (The input comes in at  $Q = 21$ .)
2. FLT: The number, scaled at  $Q = Q_1$ , is normalized and the exponent decremented from an initial value of  $Q_1$ , scaled at  $Q = 21$ .
3. FIX: The number is right shifted and the exponent incremented until  $(\text{exp}-21) = 0$ . Then tests for negative and fractional part determine if a correction must be added to the integer part to give a correct truncated result.
4. FSR: If the exponent was originally odd, the argument is shifted right one place and the exponent incremented. The exponent is then divided in two, and the square root of the mantissa taken. No normalization of the result is necessary.
5. FSQ: This routine leaves the argument both in A, B and in the pseudo-accumulator (F01-F02), and exits to FMP.
6. FMP: First the mantissas are multiplied, then a test for -0000000 is made. If the test fails (results correct) the exponents are added and the mantissa normalized. If not, the implication is that -0000000 has been multiplied by itself, which produces a result in the PB250 of -0000000, an incorrect result. In this case, the correct result (+4000000) is entered, and the two exponents are added and incremented by one.
7. FSB: The A, B registers are complemented and the routine exits to FAD. A special sequence is necessary to complement -0000000 since the one-sector multiply used to complement all other numbers does not work on this exception.
8. FAD: The two exponents are compared, the mantissa corresponding to the smaller exponent is shifted right until the binary points line up, and the common exponent is entered. The mantissas are then added. If overflow occurs, the mantissa is shifted right one place, the exponent incremented and the sign



METHOD (cont.):

changed to correct the answer. If no overflow occurs, the result is normalized.

8. FDV: The exponent of the divisor is subtracted from the exponent of the dividend, and the result saved. The dividend is shifted right one place, and the quotient taken. The new exponent is then entered and incremented by one to take care of the initial shift of the dividend.

**pb Packard Bell Computer**  
**PB 250 PROGRAM LISTING**

PROBLEM Single Precision Floating Point IDENT NUMBER 0130 A  
 PAGE 1 OF 5  
 PROGRAMMER R. Johnsen DATE 23 April 1962

LOCATION	INSTRUCTION	SYMBOLIC			REMARKS
		LOCATION	OP	ADDRESS	
00002\$	001S1000;		STC		Enter FLO
001	002S1000;		STC		Enter FIX
002	003S4300;		CLB		Set to float
003	005S0300;		ROT		
004	005S04001		LDC		Set initial exponent
005	000 00051		Const		
006	035S2000;		NAD		Float argument
007	010S15001		SUB		Decrement exponent
010	000 00051		Const		
011	012S0100;		IAC		Set to fix
012	013S1000;		STC		Enter FSR
013	015S4300;		CLB		Clear for fraction
014	015S0300;		ROT		
01602\$	045S2300;		SAI		Fix argument
017	021S2210;		SRT		Exp/2
02102\$	022S0100;		IAC		Position for root
02302\$	025 36001		TBN		Exponent odd?
024	030S1000;		STC		Save exp/2
025	027S2200;		RSI		Shift arg, incr exp
02702\$	030S1000;		STC		Save exp/2 + 1
03102\$	033S4400;		CLC		
03402\$	035S4300;		CLB		Prepare for root
035	036S0200;		IBC		Position to exit
036	064S3000;		SQR		Take square root
037	041S3700;		TRU		Exit FLO
04502\$	047 35001		TAN		Check for neg arg

**pb Packard Bell Computer**  
**PB 250 PROGRAM LISTING**

PROBLEM Single Precision Floating Point IDENT NUMBER 0130A  
 PAGE 2 OF 5  
 PROGRAMMER R. Johnsen DATE 23 April 1962

LOCATION	INSTRUCTION	SYMBOLIC			REMARKS
		LOCATION	OP	ADDRESS	
046	062S3700;		TRU		Exit FIX
047	050S0300;		ROT		
05202\$	053S56001		CAM		Check for fraction
053	000 0000;		Const		
054	055S0100;		IAC		Reposition integer
05602\$	064S0200;		IBC		Reposition fraction
06002\$	061S1300;		SDP		Enter FSO
06302\$	075S0100;		IAC		Position for multiply
064	065S0300;		ROT		Root $\longrightarrow$ A
065	102 7500;		TOF		Exit FIX if no fraction
066	072S14001		ADD		Correct integer
067	070S0600;		LDB		Re-enter exponent
07102\$	073S3700;		TRU		Exit FSR
072	000 00001		Const		
073	102S3700;		TRU		Exit FIX
074	075S0100;		IAC		Enter FMP
07602\$	077S1200;		STB		Save exp $\beta$
10002\$	102S0600;		LDB		Set to multiply
10302\$	104S1100;		STA		Set exit
10502\$	134S3200;		MUP		Multiply
11202\$	113S1000;		STC		Enter FDV
11402\$	115S56001		CAM		
115	000 0000;		Const		Exit if divide by 0
116	133 7500;		TOF		
117	120S0100;		IAC		Set divisor
12102\$	122S0500;		LDA		Enter exp $\beta$

**pb Packard Bell Computer**  
**PB 250 PROGRAM LISTING**

PROBLEM Single Precision Floating Point IDENT NUMBER 0130 A  
 PAGE 3 OF 5  
 PROGRAMMER R. Johnsen DATE 23 April 1962

LOCATION	INSTRUCTION	SYMBOLIC			REMARKS	
		LOCATION	OP	ADDRESS		
12302\$	124S1200;		STB		Save exp $a$	
12502\$	126S4300;		CLB		Clear for divide	
12702\$	131S2210;		SRT		Position for divide	
13102\$	160S3100;		DIV		Divide	
13402\$	135S0100;		IAC		Preserve product	
13602\$	137S0500;		LDA		Enter exp $\beta$	
14002\$	141S1400;		ADD		Add exp $a$	
14202\$	143S0100;		IAC		Set for normalize	
14402\$	145S56001		CAM			
145	200 0000;		Const			Test exception
146	150 75001		TOF			
147	151S2000;		NAD		Normalize product	
150	152S2200;		RSI		Fix special case	
151	155S0200;		IBC		Position for exit	
152	153S14001		ADD		Clear sign	
153	200 0000;		Const			
154	155S0200;		IBC		Position for exit	
15602\$	164S3700		TRU		Exit FMP	
16002\$	161S0500;		LDA		Enter exp $a$	
16202\$	164S1500;		SUB		Subtract exp $\beta$	
16502\$	166S14001		ADD		Increment exponent	
166	000 00001		Const			
167	170S0300;		ROT		Set for normalize	
17202\$	174S2000;		NAD		Normalize quotient	
17402\$	175S0200;		IBC		Position for exit	
17602\$	213S3700;		TRU		Exit FDV	



**pb Packard Bell Computer**  
**PB 250 PROGRAM LISTING**

PROBLEM Single Precision Floating Point

IDENT NUMBER 0130 A

PAGE 4 OF 5

PROGRAMMER R. Johnsen

DATE 23 April 1962

LOCATION	INSTRUCTION	SYMBOLIC			REMARKS
		LOCATION	OP	ADDRESS	
20002\$	201S56001		CAM		Enter FSB
201	200 0000;		Const		
202	203S1000;		STC		Save exit
20402\$	206 75001		TOF		Check exception
205	206S0100;		IAC		Position for complement
206	210S16001		DPA		Increment exponent
207	212S4500;		CLA		Clear for complement
210	000 00001		Const		
211	000 0000;		Const		
212	223S05001		LDA		Enter correct complement
213	215S2110;		SLT		Ready for mult bit
21502\$	216S16001		DPA		Load mult bit
216	000 00001		Const		
217	000 0000;		Const		
220	222S3237;		MUP		Complement
221	223S1000;		STC	F03	Enter FAD
222	225S1300;		SDP	F05	Save $\beta$
223	100 0000;		Const		
224	225S1300;		SDP		Save $\beta$
22702\$	236S0300;		ROT		Position exponent
24002\$	241S1500;		SUB		Exp $\alpha$ - exp $\beta$
24202\$	243S0100;		IAC		Set to line up args
24402\$	250 34001		TCN		Check relative magnitude
245	246S06001		LDB		Prepare to complement
246	000 00001		Const		
247	251S3200;		MUP		Complement difference

**pb Packard Bell Computer**  
**PB 250 PROGRAM LISTING**

PROBLEM Single Precision Floating Point IDENT NUMBER 0130 A  
 PAGE 5 OF 5  
 PROGRAMMER R. Johnsen DATE 23 April 1962

LOCATION	INSTRUCTION	SYMBOLIC			REMARKS
		LOCATION	OP	ADDRESS	
250	276S2300;		SAI		Line up arguments
251	260S0100;		IAC		Set to line up args
26102\$	262S0500;		LDA		Enter argument
26302\$	311S2300;		SAI		Line up arguments
27602\$	277S4300;		CLB		Clear unwanted portion
30002\$	<sup>3</sup> 201S1600;		DPA	CHECK	add $a$ , enter exp
30302\$	330S0200;		IBC		Position for normalize
31102\$	323S4300;		CLB		Clear unwanted portion
32402\$	325S1600;		DPA		Add $\beta$ , enter exp
32702\$	330S0200;		IBC		Position for normalize
33102\$	333 75001		TOF		Check overflow
332	334S2000;		NAD		Normalize sum
333	335S2200;		RSI		Reposition sum
334	340S0200;		IBC		Position for exit
336	336S15001		SUB		Change sign back
336	200 0000;		Const		
337	340S0200;		IBC		Position for exit
34102\$	343S3700;		TRU		Exit FAD and FSB
36002\$	361S1000;		STC		Enter FLT
36202\$	363S0200;		IBC		
36402\$	005S4300;		CLB		

IDENTIFICATION: SIN-COS I  
Subroutine

AUTHOR: C. Yingst, PBCC

ACCEPTED: January 18, 1961

PURPOSE: To find the sine or cosine of a given argument.

SPACE: 71 words in one long line, plus channels F03, F10, and  
REQUIRED F15 of line 00.

TIMING: 3.072 milliseconds maximum

ACCURACY: Maximum error,  $\pm .00001$

## USE:

1. Calling Sequence  
Load index register with line number of subroutine

LDA  $\theta$  (see paragraph 3, below)

LDC return command

TRU subroutine

Transfer is to 350LL for sine  $\theta$  and to 345LL for cosine  $\theta$ , where LL is the line number of the subroutine.

2. Upon exit from the subroutine, the sin or cos will be in the A register scaled at  $Q = 0$ . For example:

$$\text{Sin } 30^\circ = +4000000 = 0 \ 100.000 \ 000 \rightarrow 000 \quad A_{22}$$

$$\text{Sin } 90^\circ = +7777777 = 0 \ 111 \ 111 \ 111 \rightarrow 111$$

3. The argument,  $\theta$ , must be placed in the A register as an octal fraction of  $360^\circ$  scaled at  $Q = 0$ . For example:

$$0^\circ = +0000000 = 0 \ 000 \ 000 \ 000 \rightarrow 000 = 0 \quad A_{22}$$

$$90^\circ = +2000000 = 0 \ 010 \ 000 \ 000 \rightarrow 000 = +.25$$

$$270^\circ = +6000000 = 0 \ 110 \ 000 \ 000 \rightarrow 000 = +.75$$

$$-90^\circ = -6000000 = 1 \ 110 \ 000 \ 000 \rightarrow 000 = -.25$$

USE (cont.):

4. The Sine-Cosine subroutine will normally be on the same tape as the Arctan subroutine, as both programs occupy the same memory line.

METHOD:

This subroutine essentially makes use of the following polynomial approximation:

$$\sin \frac{\pi}{2} X = C_1 X + C_3 X^3 + C_5 X^5 + C_7 X^7$$

Where:  $-1 \leq X \leq 1$

$$C_1 = 1.570794852$$

$$C_3 = .645920978$$

$$C_5 = .079487663$$

$$C_7 = -.004362476$$

Reference: "Approximations for Digital Computers,"  
C. Hastings, Princeton University Press, 1955, page 139.



PB 250 PROGRAM LISTING

PROBLEM SIN COS

PAGE 1 OF 3

PROGRAMMER C. YINGST

DATE 2-15-61

LOCATION	INSTRUCTION	SYMBOLIC OF CODE	REMARKS
34503\$	346S0603I	LDB	COS $\theta$ ENTRANCE, $\theta$ AT 0 90° SCALED AT 0 $\theta \rightarrow F 15 \cos 0 = \sin (90-\theta)$
34603\$	+2000000		
34703\$	355S1100;	STA	
35003\$	352 3503I	TAN	SIN $\theta$ ENTRANCE, $\theta$ AT 0
35103\$	003S1000;	STC	CHECK IF NEGATIVE ANGLE ELIMINATE NEGATIVE ANGLE 180° SCALED AT 0.
35203\$	353S0603I	LDB	
35303\$	+4000000		
35403\$	355S1100;	STA	$\theta \rightarrow F15$
35603\$	371S0200;	IBC	IF COS, COS $\theta = \sin (90-\theta)$
37203\$	373S0100;	IAC	
37403\$	375S1500;	SUB	IF SIN, SIN $\theta = \sin (180-\theta)$
37603\$	000 3503I	TAN	ELIMINATE CARRY INTO SIGN POSITION. OR MAKE COS (- $\theta$ ) = COS $\theta$
37703\$	002S3703I	TRU	
00003\$	001S1403I	ADD	
00103\$	-0000000		
00203\$	003S1200;	STB	EXIT IN F03.
00403\$	005S1403I	ADD	IS $\theta \geq 180^\circ$ ? YES IF NEGATIVE.
00503\$	+4000000		
00603\$	021 3503I	TAN	
00703\$	010S1403I	ADD	IS $\theta = 90^\circ$ ? YES IF OVERFLOW.
01003\$	+2000000		
01103\$	012S5603I	CAM	
01203\$	-0000000		
01303\$	016 7503I	TOF	IS $\theta > 90^\circ$ ? YES IF NEGATIVE
01403\$	027 3503I	TAN	
01503\$	051S3703I	TRU	
01603\$	323S0503I	LDA	SIN 90 = 1
02103\$	022S1403I	ADD	IS $X \geq 270$ ?
02203\$	-6000000		
02303\$	024S5603I	CAM	CHECK FOR $X = 270^\circ$
02403\$	-0000000		
02503\$	324 7503I	TOF	

PB 250 PROGRAM LISTING

PROBLEM SIN COS

PAGE 2 OF 3

PROGRAMMER C. YINGST

DATE 2-15-61

LOCATION	INSTRUCTION	SYMBOLIC OP CODE	REMARKS
02603\$	051 3503I	TAN	TEST FOR X > 270 YES IF NEGATIVE
02703\$	030S1100;	STA	
03103\$	032S5603I	CAM	CHECK FOR X = 180°
03203\$	+6000000		
03303\$	037 7503I	TOF	COMPLEMENT ARGUMENT
03403\$	035S4500;	CLA	
03603\$	050S1500;	SUB	SIN 180° = 0 X SCALED AT 0
03703\$	326S4500;	CLA	
05103\$	054S2100;	LSD	X → F15 SCALED AT 0 X → C REG. SCALED AT 0
05403\$	055S1100;	STA	
05603\$	057S0100;	IAC	X → B REG. X² SCALED AT 0
06003\$	075S0600;	LDB	
07603\$	125S3200;	MUP	X² → C REG. X² → F 10
12503\$	126S0100;	IAC	
12703\$	130S1000;	STC	C₇ SCALED AT -3 INTO B REG. C₇ = - .004362476 AT -3.
13103\$	132S0603I	LDB	
13203\$	-7560415		X² C₇ SCALED AT -2. C₅ + X² C₇ SCALED AT -3
13303\$	163S3200;	MUP	
16303\$	164S1403I	ADD	C₅ = .079487663 SCALED AT -2 X² → B REG.
16403\$	+2426247		
16503\$	166S0200;	IBC	C₅ + X² C₇ SCALED AT 5 X² C₅ + X⁴ C₇ → A REG. AT -2.
16703\$	170S0100;	IAC	
17103\$	220S3200;	MUP	( X² C₅ + X⁴ C₇ ) SCALED AT 0. ( C₃ + X² C₅ + X⁴ C₇ ) AT 0.
22003\$	223S2200;	RSI	
22303\$	224S1403I	ADD	C₃ = -.645920978 AT 0. ( C₃ + X² C₅ + X⁴ C₇ ) → C REG.
22403\$	-2652235		
22503\$	226S0100;	IAC	X² SCALED AT 0. → B REG. ( X² C₃ + X⁴ C₅ + X⁶ C₇ ) AT 1.
22703\$	230S0600;	LDB	
23103\$	261S3200;	MUP	( C₁ + X² C₃ + X⁴ C₅ + X⁶ C₇ ) C₁ = 1.570794852 AT 1.
26103\$	262S1403I	ADD	
26203\$	+6220773		
26303\$	264S0100;	IAC	



IDENTIFICATION: ARCTAN (X/Y)

AUTHOR: C. Yingst, PBCC

ACCEPTED: January 18, 1961

PURPOSE: To find the principal value, in radians, of  $\tan^{-1}(X/Y)$  for a given pair of arguments.

SPACE: 102 words in one long line, plus F01, F03, F05, F11,  
REQUIRED F14, F15 of line 00. The storage requirements of the Arctan subroutine are compatible with those of the Sin-Cos subroutine (Cat. No. 500). That is, the Arctan and Sin-Cos subroutines can occupy the same line simultaneously.

TIMING: 4.608 milliseconds maximum execution time.

ACCURACY:  $\pm .00001$

USE: 1. Calling Sequence  
Load Index register with line number of subroutine.

LDA	X
LDB	Y
LDC	return command
TRU	subroutine

Note: X and Y can be at any scaling, but the scaling of X must equal the scaling of Y.

The subroutine is entered at sector 040, line LL, where LL is the line number of the subroutine, and has been previously loaded into the Index register.

2. Upon exit from the subroutine,  $\phi = \arctan (X/Y)$  will be in the A register in radian units scaled at  $Q = 1$ .

3. The Arctan subroutine will normally be on the same tape as the Sin-Cos subroutine, since both programs occupy the same memory line.



## METHOD:

Polynomial approximation for  $0 < (X/Y) < \tan 7.5^\circ$  and continued fractions for  $\tan 7.5^\circ \leq (X/Y) \leq 1$ .

Should  $(X/Y) > 1$ , the  $\cotan^{-1}$  is found of  $(Y/X)$  for  $\tan^{-1}(X/Y) = \cotan^{-1}(Y/X)$ .

The polynomial approximation used is:

$$\tan^{-1} N \approx N \left[ C_0 - N^2 (C_1 - C_2 N^2) \right]$$

$$\begin{aligned} \text{with} \quad C_0 &= 0.9999999 \\ C_1 &= 0.3332966 \\ C_2 &= 0.1957408 \end{aligned}$$

The continued fractions are:

$$\tan^{-1} N \approx N \left\{ A_0 + \frac{A_1}{N^2 + B_1} - \frac{A_2}{N^2 + B_2} \right\}$$

$$\begin{aligned} \text{with} \quad A_0 &= 0.2388229 \\ A_1 &= 2.4452053 \quad B_1 = 3.9435297 \\ A_2 &= 1.3147472 \quad B_2 = 1.7982496 \end{aligned}$$

**pb Packard Bell Computer**

**PB 250 PROGRAM LISTING**

PROBLEM ARCTAN

PAGE 1 OF 4

PROGRAMMER C. YINGST

DATE 2-21-61

LOCATION	INSTRUCTION	SYMBOLIC OP CODE	REMARKS
04007\$	041S1000;	STC	ENTRANCE. EXIT INTO F01
04207\$	043S1200;	STB	Y INTO F03
04407\$	045S1100;	STA	X INTO F05
04607\$	052 3507I	TAN	IS X NEG. ?
04707\$	055 3607I	TBN	IS Y NEG. ?
05007\$	063S1500;	SUB	X - Y
05507\$	063S1400;	ADD	X + Y
06407\$	105 3507I	TAN	IS Y > X ? YES IF NEG.
06507\$	112S3707I	TRU	X > Y
05207\$	057 3607I	TBN	IS Y NEG ?
05307\$	103S1400;	ADD	X + Y
05707\$	103S1500;	SUB	X - Y
10407\$	112 3507I	TAN	IS X > Y ? YES IF NEG.
10507\$	106S0200;	IBC	GET X/Y.
10707\$	110S0607I	LDB	SET INDICATOR WORD, $\theta < 45^\circ$
11007\$	-0000000		Y INTO C REG.
11107\$	125S0500;	LDA	X INTO A REG.
11207\$	113S4400;	CLC	GET Y/X.
11407\$	115S0300;	ROT	SET INDICATOR WORD, $\theta > 45^\circ$
11707\$	125S0400;	LDC	Y INTO A REG.
12607\$	135S1200;	STB	X INTO B REG.
13607\$	140S4300;	CLB	
14107\$	170S3100;	DIV	N = X/Y OR
17007\$	172S1200;	STB	N = Y/X → F12
17307\$	174S1200;	STB	N → F14 SCALED AT 0.
17507\$	176S0200;	IBC	CHECK FOR AN N OF UNITY.
17707\$	201S2200;	RSI	
20107\$	204 3600I	TBN	
20207\$	210 3400I	TCN	N = 1
20307\$	213S3707I	TRU	

**PB 250 PROGRAM LISTING**

PROBLEM ARCTAN

PAGE 2 OF 4

PROGRAMMER C. YINGST

DATE 2-21-61

LOCATION	INSTRUCTION	SYMBOLIC OP CODE	REMARKS
20407\$	213 34071	TCN	$N = 1$ TEST FOR $N = 0$
20507\$	206S4500;	CLA	
20707\$	225S5600;	CAM	
22607\$	232S4300;	CLB	
23307\$	235S2100;	LSD	
23507\$	261 7500;	TOF	
23607\$	316S05071	LDA	
31607\$	-4667403	-45	
31707\$	070 34071	TCN	
32007\$	361S3700;	TRU	
07007\$	072S2100;	LSD	$\text{ARCTAN } 1 = 45^\circ$
07207\$	101S3700;	TRU	
21007\$	211S05071	LDA	
21107\$	+3110375	+45°	
21207\$	221S3700;	TRU	
21307\$	214S0600;	LDB	
21507\$	244S3200;	MUL	
24407\$	245S4400;	CLC	
24607\$	247S0000;	MRG	
25007\$	251S1100;	STA	
25207\$	253S15071	SUB	$\text{IS } N < \text{TAN } 7.5^\circ$  COMPUTE $\text{ARCTAN } N > 7.5^\circ$  $N^2 + B_2^*$ SCALED AT 2.
25307\$	+0106773		
25407\$	256 35001	TAN	
25507\$	263S0100;	IAC	
26407\$	267S2200;	RSI	
26707\$	270S14071	ADD	
27007\$	+3461320	$B_2^*$	
27107\$	272S0100;	IAC	
27307\$	274S05071	LDA	
27407\$	+2502232	$A_2^*$	

**PB 250 PROGRAM LISTING**

PROBLEM ARCTAN

PAGE 3 OF 4

PROGRAMMER C. YINGST

DATE 2-21-61

LOCATION	INSTRUCTION	SYMBOLIC OP CODE	REMARKS
27507\$	303S4300;	CLB	A* <sub>2</sub> / (N <sup>2</sup> + B* <sub>2</sub> ) SCALED AT 2.
30407\$	330S3100;	DIV	
33007\$	331S0500;	LDA	N <sup>2</sup> INTO A REG AT 0.
33207\$	334S1200;	STB	P = A* <sub>2</sub> / (N <sup>2</sup> + B* <sub>2</sub> ) → F14
33507\$	341S2200;	RSI	N <sup>2</sup> SCALED AT 2.
34107\$	342S1407I	ADD	(N <sup>2</sup> + B* <sub>1</sub> ) SCALED AT 3.
34207\$	+3743054	B* <sub>1</sub>	B* <sub>1</sub> SCALED AT 3.
34307\$	354S1500;	SUB	(N <sup>2</sup> + B* <sub>1</sub> - P) SCALED AT 2.
35507\$	356S0100;	IAC	
35707\$	365S0507I	LDA	A* <sub>1</sub> , SCALED AT 3.
36507\$	+1161762	A* <sub>1</sub>	
36607\$	367S4300;	CLB	
37007\$	017S3100;	DIV	A* <sub>1</sub> / (N <sup>2</sup> + B* <sub>1</sub> - P) SCALED AT 1.
01707\$	026S0300;	ROT	
03007\$	077S1407I	ADD	A* <sub>0</sub> + A* <sub>1</sub> / (N <sup>2</sup> + B* <sub>1</sub> - P) SCALED AT 1.
07707\$	+0751055	A* <sub>0</sub>	
10007\$	101S0100;	IAC	
10207\$	112S0600;	LDB	N SCALED AT 0. INTO B REG.
11307\$	120S3707I	TRU	
12007\$	147S3200;	MUP	N[A* <sub>0</sub> + A* <sub>1</sub> / (N <sup>2</sup> + B* <sub>1</sub> - P)] SCALED AT 1.
14707\$	151S1100;	STA	
15207\$	155S0600;	LDB	CHECK IF ARCTAN N < 45°
15607\$	161 3600;	TBN	YES IF NEG. EXIT.
15707\$	166 3507I	TAN	
16007\$	161S0507I	LDA	ARCTAN N > 45°
16107\$	+6220772	π/2	ADJUST ANSWER BY π/2.
16207\$	217S3707I	TRU	
16607\$	216S0507I	LDA	
21607\$	-1557006	-π/2	
21707\$	231S1500;	SUB	





IDENTIFICATION: LOGARITHM, BASE 2, e, 10  
Fixed Point Subroutine

AUTHORS: P. Jarvie, PBCC  
F. Valadez, PBCC

ACCEPTED: April 15, 1961

PURPOSE: To calculate the logarithm, base 2, e, or 10 of a single precision, binary-scaled, fixed point number.

RESTRICTIONS: 1. The argument, X, must be greater than zero.  
2. The binary scale, Q, of the argument must be no greater, in magnitude, than 21.

SPACE: The routine is line relocatable and requires 86 sectors of one long line plus F01, F04 through F06, and F10 through F17. The routine is designed to merge in the same line with  $k^X$ .

TIMING: Base 10 - - 2.62 ms  
Base e - - 2.81 ms  
Base 2 - - 3.00 ms

ACCURACY:  $|\epsilon| < 10^{-6}$   
 $\epsilon = A - T$   
A = computed value  
T = true value

USE: 1. Calling Sequence  
Set Index register with line number of subroutine

LDA	argument @Q
LDB	Q of argument @21
LDC	return command
TRU	entry

Entry is 005LL for  $\log_2$ , 025LL for  $\log_e$ , or 045LL for  $\log_{10}$ , where LL is the line location of the subroutine.

## 2. Output

The subroutine exists with the logarithm of the argument in the combined AB registers scaled @Q = 6, and with overflow off.

## 3. Error Alarms

If the argument in the A register is not greater than zero, the subroutine exists with all one's in AB and with overflow on.

## 4. Program Tape

The logarithm subroutine is on the same tape as the exponential subroutine (catalog number 0113), since both have compatible storage requirements.

## METHOD:

X is reduced to a range where a continued fraction approximation is valid.

$$\text{We have} \quad \log_k X \equiv \log_k 2 \log_2 X$$

$$\text{and} \quad \log_2 X \equiv n + \log_2 2^{-n} X$$

where n is an integer and  $2^{-n} X \in [1/2, 1)$

$$\text{Now, letting } X_n = 2^{-n} X$$

$$\log_2 X_n = \log_2 e \log_e X_n$$

$$\text{so that} \quad \log_k X = \log_k 2 (n + \log_2 e \log_e X_n)$$

$$= (\log_k 2)n + \log_k e \log_e X_n$$

If  $X_n$  is far away from 1, a multiplier, 1.5, is introduced for further reduction, so that, finally,

$$\log_k X = M_k^n + K_k + A_k(t)$$

where  $M_k = \log_k 2^2$

$$K_k = \begin{cases} -\log_k 1.5, & X_n < .875 \\ 0, & X_n \geq .875 \end{cases}$$

and

$$A_k(t) = t \left[ A_{k0} + \frac{A_{k1}|t|}{|t + A_2|} + \frac{A_3|t|}{|t + A_4|} \right]$$

where  $A_{k0} = 1/9 (\log_k e)$

$$A_{k1} = 17/9 (\log_k e)$$

$$A_2 = 124/51$$

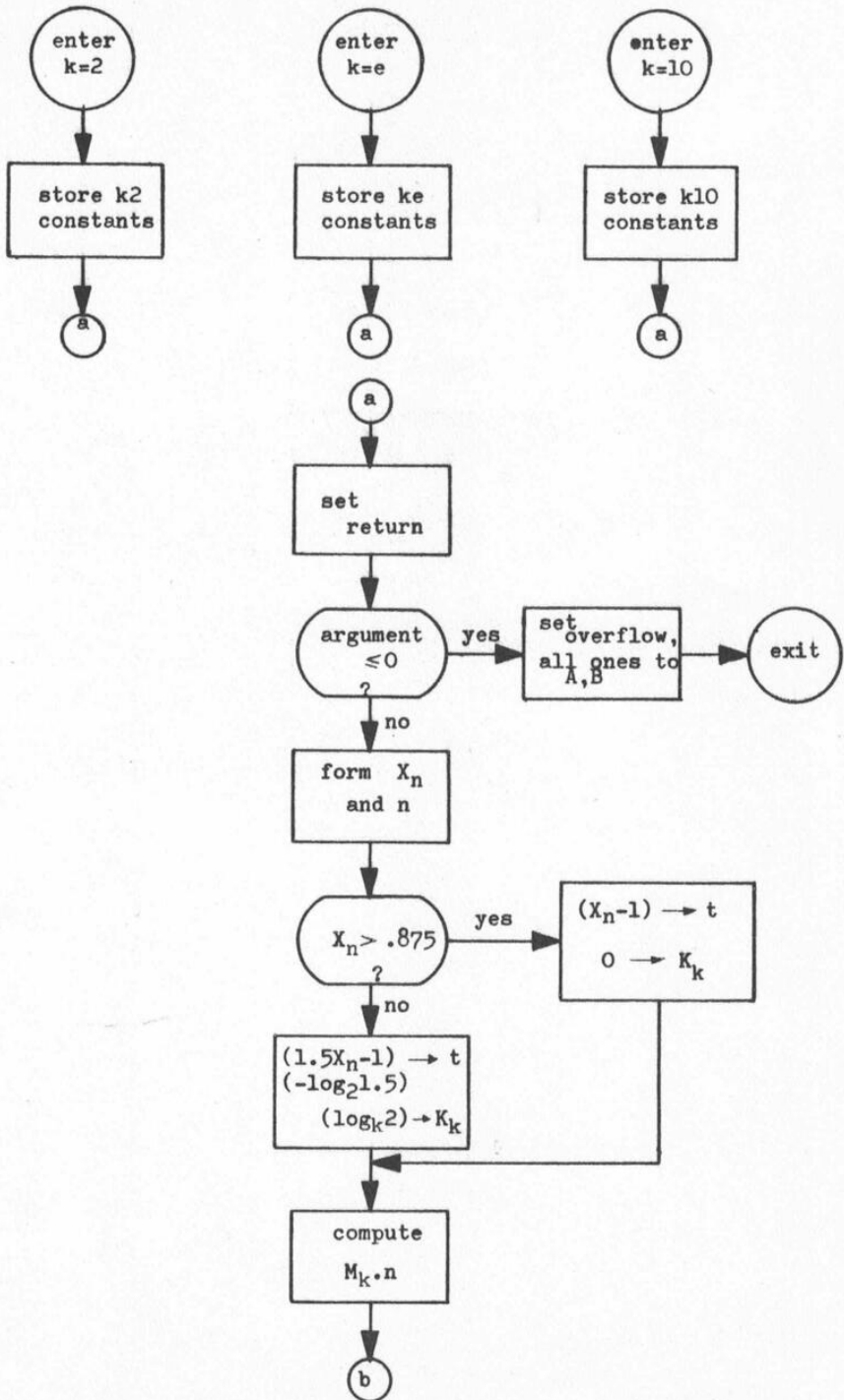
$$A_3 = -1250/(51)^2$$

$$A_4 = 80/51$$

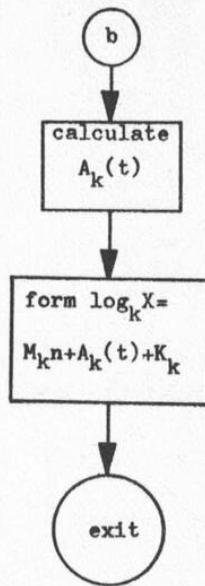
Flow Diagram  
 LOGARITHM, BASE 2, e, 10

Catalog Number 0112

Sheet 1 of 2







**PB 250 PROGRAM LISTING**

CATALOG NUMBER 0112

PROBLEM LOGARITHM, BASE 2, E, 10

PAGE 1 OF 4

PROGRAMMER F. VALADEZ

DATE 5-5-61

LOCATION	INSTRUCTION	SYMBOLIC OP CODE	REMARKS
00506\$	015S7100;	MCL	STORE CONSTANTS FOR K = 2
00606\$	+7777777	CONST	
01006\$	+0510226	CONST	
01106\$	+2256002	CONST	
01206\$	+2426072	CONST	
01406\$	+2563176	CONST	
01506\$	056S1000;	STC	SET RETURN
02506\$	035S7100;	MCL	STORE CONSTANTS FOR K = E
02606\$	+5427103	CONST	
03006\$	+0343434	CONST	
03106\$	+1476311	CONST	
03206\$	-6161616	CONST	
03406\$	+1707070	CONST	
03506\$	056S1000;	STC	SET RETURN
04506\$	055S7100;	MCL	STORE CONSTANTS FOR K = 10
04606\$	+2321012	CONST	
05006\$	+0142647	CONST	
05106\$	+0550505	CONST	
05206\$	-2210664	CONST	
05406\$	+0644005	CONST	

LOCATION	INSTRUCTION	SYMBOLIC OP CODE	REMARKS
05506\$	056S1000;	STC	SET RETURN
05706\$	076 35061	TAN	CHECK FOR ARGUMENT $\leq 0$
06006\$	063S56061	CAM	
06306\$	+0000000	CONST.	
06406\$	076 75061	TOF	FORM $X_N$ AND $N$
06506\$	066S0200;	IBC	
06706\$	070S4300;	CLB	
07106\$	116S2000;	NAD	ERROR RETURN
07606\$	126S4500;	CLA	
11606\$	117S1100;	STA	TEST FOR RANGE OF $X_N$
12006\$	121S15061	SUB	
12106\$	+7000000	CONST	
12206\$	124 35061	TAN	
12306\$	131S4500;	CLA	
12406\$	125S14061	ADD	
12506\$	+7000000	CONST	
12606\$	130S2210;	SRT	
12706\$	163S56061	CAM	ERROR RETURN
13006\$	131S0600;	LDB	SET $K_K$
13206\$	133S1200;	STB	FORM $T$
13406\$	135S14061	ADD	
13506\$	-0000000	CONST	
13606\$	137S1400;	ADD	COMPUTE $M_K \cdot N$
14006\$	141S1100;	STA	
14206\$	144S0200;	IBC	
14506\$	146S0400;	LDC	
14706\$	157S3200;	MUP	
15706\$	161S0400;	LDC	
16206\$	164S1300;	STD	

LOCATION	INSTRUCTION	SYMBOLIC OP CODE	REMARKS
16306\$	+0000000	CONST	ERROR RETURN
16406\$	203S0506I	LDA	
16606\$	167S0100;	IAC	COMPUTE A,K (T)
17006\$	172S2210;	SRT	
17206\$	173S1606I	DPA	
17306\$	-0000000	CONST	
17406\$	+6214431	CONST	
17506\$	176S0100;	IAC	
17706\$	200S0706I	LDP	
20006\$	-3676637	CONST	
20106\$	-6047606	CONST	
20206\$	231S3100;	DIV	
20306\$	-7777777	CONST	ERROR RETURN
20406\$	205S0606I	LDB	
20506\$	-7777777	CONST	
20606\$	376S3700;	TRU	COMPUTE A,K (T)
23106\$	234S0500;	LDA	
23506\$	236S0300;	ROT	
24006\$	241S1400;	ADD	
24206\$	245S2210;	SRT	
24506\$	246S1606I	DPA	
24606\$	-4000000	CONST	
24706\$	+4671563	CONST	
25006\$	252S0600;	LDB	
25306\$	254S0100;	IAC	
25506\$	304S3100;	DIV	
30406\$	305S0300;	ROT	
30706\$	310S1400;	ADD	
31106\$	313S0100;	IAC	
31406\$	321S0600;	LDB	





IDENTIFICATION: EXPONENTIAL, BASE 2, e, 10  
Fixed Point Subroutine

AUTHORS: P. Jarvie, PBCC  
F. Valadez, PBCC

ACCEPTED: April 28, 1961

PURPOSE: To calculate 2, e, or 10 to a given power, X.

RESTRICTIONS: 1. The argument, X, must be limited as follows:

- a) Base 2 :  $X < 20.4$
- b) Base e :  $X < 14.2$
- c) Base 10 :  $X < 6.15$

2. The binary scale, Q, of the argument must lie within the range:

$$-6 \leq Q \leq 19$$

STORAGE: 81 sectors in one long line, plus F01, F05, F06, F12, F13, and F15. This routine is designed to merge in the same line with Logarithm, Base 2, e, 10 (catalog number 0112). Note: Sector 376 of the long line is used.

TIMING: Base 2 - - 3.32 ms  
Base e - - 3.56 ms  
Base 10 - - 3.80 ms

ACCURACY:  $\epsilon < 2 \cdot 10^{-6}$   
For  $X < 0$ ,  $\epsilon = |\epsilon_A|$   
For  $X \geq 0$ ,  $\epsilon = |\epsilon_R|$

ACCURACY (cont.):

where  $\epsilon_A = A - T$ 

$$\epsilon_R = \epsilon_A / T$$

and  $A =$  computed value $T =$  true value

USE:

1. Calling Sequence

Set Index register with line number of subroutine.

```

LDA    X@Q
LDB    QX@21
LDC    return command
TRU    entry

```

Entry is 000LL for  $10^X$ , 020LL for  $e^X$ , and 040LL for  $2^X$ , where LL is the line location of the subroutine.

2. Output

The subroutine exits with the value of the exponential in the combined AB registers, scaled at 21.

3. Error Alarms

There are no error alarms. Specifying an X or Q outside the allowable range will cause an erroneous answer to be computed.

METHOD:

A rational function approximation, A, was found to  $e^X$  which is very accurate for  $X \in \sim (-.13, +.13)$ :

$$A = 1 + \frac{12X}{(X-3)^2 + 3}$$

METHOD (cont.): Now, since  $K^X \equiv 2^{(\log_2 K)X} = 2^{n+F}$  ( $K = 2, e, \text{ or } 10$ )

where  $n$  an integer

$$\text{and } F \in \left[-\frac{1}{2}, \frac{1}{2}\right)$$

$$\text{and } 2^F \equiv e^{(\log_e 2)F} = e^f$$

where  $f \in \sim(-.35, .35)$

and, also, since

$$e^f = B_j e^{f+l_j} \quad j = 1, 2, 3$$

for  $f \in I_j$

where  $l_j = -\log_e B_j$

$$\text{and } B_1 = .75 \text{ for } I_1 = (-.35, -.12)$$

$$B_2 = 1.00 \text{ for } I_2 = [-.12, .12]$$

$$B_3 = 1.25 \text{ for } I_3 = (.12, .35)$$

Noting that  $f + l_j = Z \in \sim(-.13, .13)$

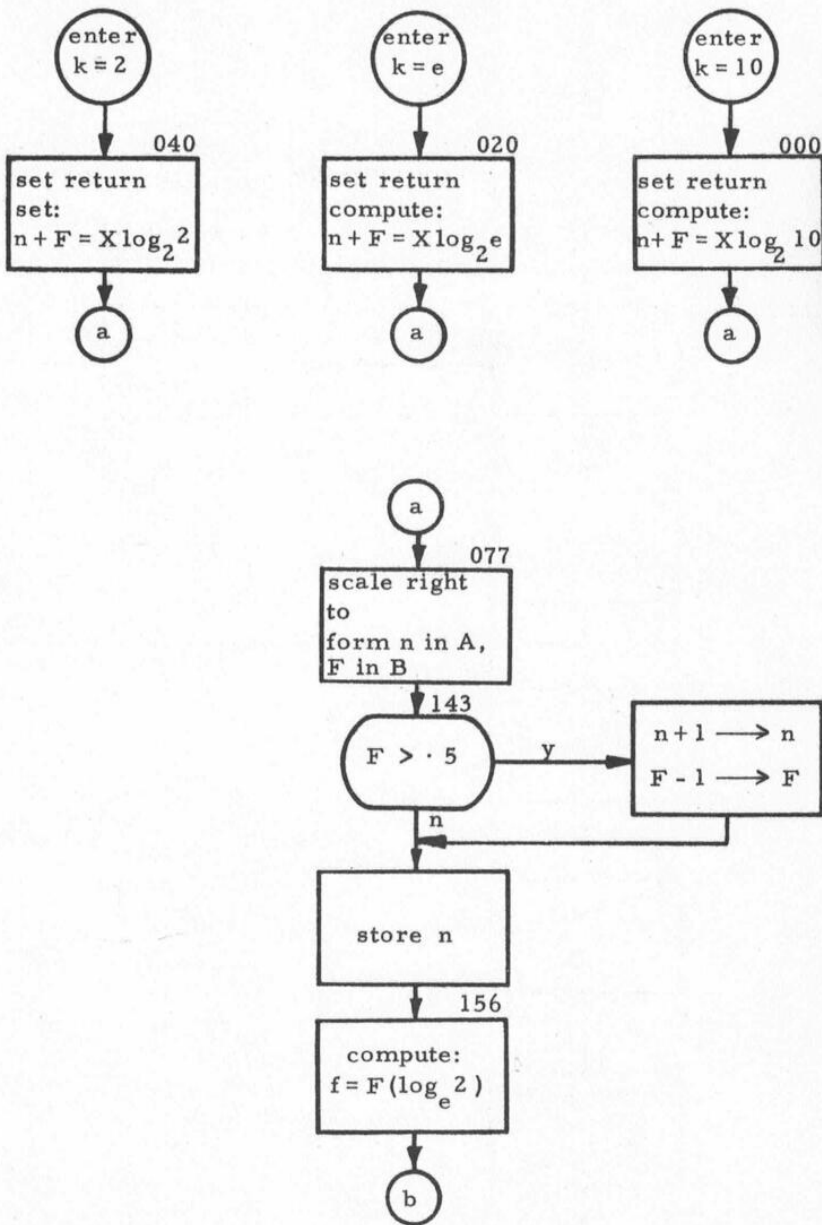
we have  $K^X = 2^n B_j e^Z$

or, finally,  $K^X = 2^n B_j A(Z)$

Flow Diagram  
EXPONENTIAL, BASE 2, e, 10

Catalog Number 0113

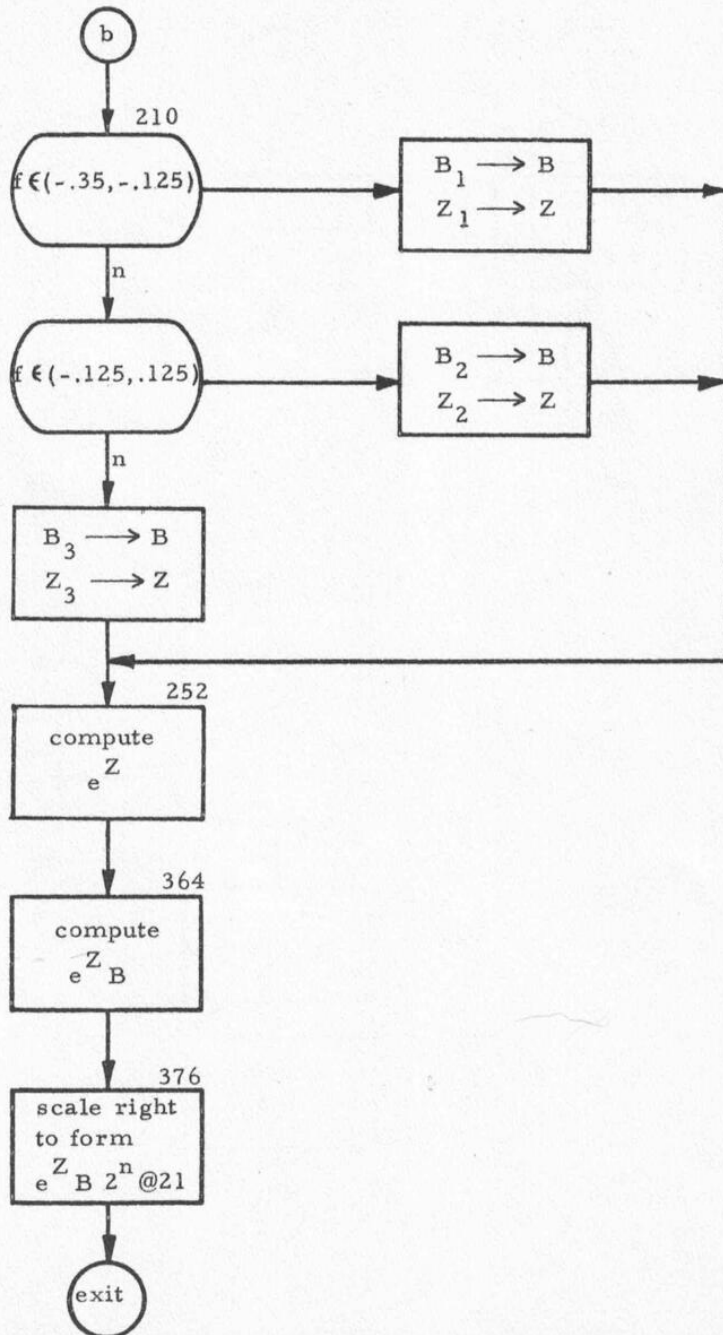
Sheet 1 of 2



Flow Diagram  
EXPONENTIAL, BASE 2, e, 10

Catalog Number 0113

Sheet 2 of 2





**pb Packard Bell Computer**

**PB 250 PROGRAM LISTING**

CATALOG NUMBER 0113

PROBLEM EXPONENTIAL, BASE 2, E, 10

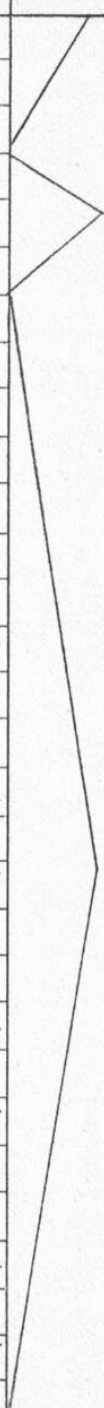
PAGE 1 OF 3

PROGRAMMER F. VALADEZ

DATE 5-8-61

LOCATION	INSTRUCTION	SYMBOLIC OF CODE	REMARKS
00006\$	001S1000;	STC	ENTRY FOR k = 10
00206\$	016S0406I	LDC	
01606\$	+6511517	CONST	
01706\$	025S1300;	STD	ENTRY FOR k = E
02006\$	021S1000;	STC	
02206\$	023S0406I	LDC	
02306\$	+2705244	CONST	COMPUTE N + F IF k = 10, E
02406\$	025S1300;	STD	
02706\$	031S0300;	ROT	
03306\$	062S3200;	MUP	ENTRY FOR k = 2
04006\$	041S1000;	STC	
04206\$	045S1300;	STD	
04706\$	055S4300;	CLB	FORM : N IN A REGISTER F IN B REGISTER
05606\$	061S2210;	SRT	
06106\$	065S0400;	LDC	
06206\$	065S0400;	LDC	TEST FOR F > .5
06606\$	067S0100;	IAC	
07006\$	073S7100;	MCL	
07206\$	+0000024	CONST	
07306\$	074S1506I	SUB	
07406\$	+0000023	CONST	
07506\$	076S0100;	IAC	
07706\$	131S2300;	SAI	
13106\$	132S1500;	SUB	
13306\$	136S0100;	IAC	
13706\$	142S4500;	CLA	
14306\$	150 3606I	TBN	
14406\$	146S2210;	SRT	
14606\$	155S1000;	STC	
15006\$	151S0506I	LDA	

**pb Packard Bell Computer****PB 250 PROGRAM LISTING**PROBLEM EXPONENTIAL BASE 2, E, 10PROGRAMMER F. VALADEZCATALOG NUMBER 0113PAGE 2 OF 3DATE 5-8-61

LOCATION	INSTRUCTION	SYMBOLIC OP CODE	REMARKS
15106\$	-7777777	CONST	 <p>COMPUTE <math>F = F (\text{LOG } e^2)</math></p> <p>DETERMINE RANGE OF F AND SELECT CORRESPONDING VALUES OF B<sub>j</sub> AND Z</p>
15206\$	154S2200;	RSI	
15406\$	155S1000;	STC	
15606\$	160S0406I	LDC	
16006\$	+1305621	CONST	
16106\$	210S3200;	MUP	
21006\$	223 3506I	TAN	
21106\$	212S1506I	SUB	
21206\$	+0200000	CONST	
21306\$	221 3506I	TAN	
21406\$	215S1406I	ADD	
21506\$	-1633401	CONST	
21606\$	217S0406I	LDC	
21706\$	+0000017	CONST	
22006\$	251S1000;	STC	
22106\$	222S1406I	ADD	
22206\$	+0200000	CONST	
22306\$	224S1406I	ADD	
22406\$	+0200000	CONST	
22506\$	234 3506I	TAN	
22606\$	227S1506I	SUB	
22706\$	+6200000	CONST	
23006\$	232S0406I	LDC	
23206\$	+0000014	CONST	
23306\$	251S1000;	STC	
23406\$	236S1506I	SUB	
23606\$	+5531324	CONST	
23706\$	243S0406I	LDC	
24306\$	+0000011	CONST	
24406\$	251S1000;	STC	

